

# CROMA

cutting machine



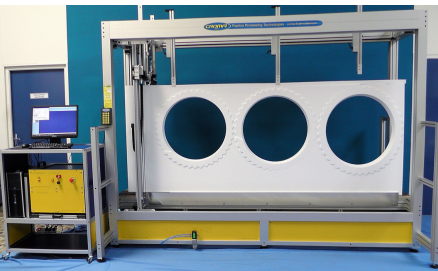
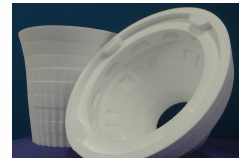
## STRATO Series

This exclusive system, developed by CROMA as a result of a collaboration with the CIRTES, makes your hot wire cutting machine operate as a 3D printer.

The most complex shapes or the most acute cutting angles can be achieved with this additive manufacturing process. This is the perfect machine for prototyping, sculpture making, complex molds or technical parts.

### ADVANTAGES

- › Economical: optimizes the material consumption and shortens the manufacturing of oversized parts
- › Quick: this process is much faster than milling, 3D printing or any other technology on the market
- › Easy to use: intuitive and operator friendly software
- › Simplified assembling, thanks to the positioning inserts
- › Easy and clean cuts: noiseless and dust-free
- › Retaining plate included, pneumatic presser
- › Unlimited volume of the parts, solid or hollow
- › 2 years warranty



### TECHNICAL DATA



1 meter high head cutting



#### TECHNOLOGY

- 4 axes

#### ENGINES

- Stepper motor

#### MAXIMUM SPEED

- 3.5 m / min

#### ACCURACY

- ± 1 mm

#### RESOLUTION

- 0.1 mm

#### REPEATABILITY

- 0.05 mm

#### CUTTING WIRE

- Nickel / Chrome base, delivered with 5 spare wires
- Ø 0.3 mm

#### CUTTING TABLE

- Reinforced wood, 13-ply

#### GUIDANCE

- Linear ball bearing

#### STRUCTURE

- Stainless anodized aluminum

#### HEATING

- External and adjustable

#### WIRE EXTENSION

- 600 to 700 mm - angle > 50 °

#### SOFTWARE

- Croma & Stratoconception

#### IMPORT FILES

- .STL

#### INTERFACE

- Windows XP, 7, 8, 10

#### CONNECTION

- Ethernet RJ 45

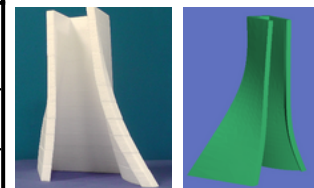
#### POWER SUPPLY

- 230 VAC or 115VAC



### MODELS

Cutting capacities	100	310	520
X (Horizontal movement - mm)	1150	3050	5000
Y (Vertical stroke - mm)	600	1200	2500
Z (Working length of the wire - mm)	115	250	250



Feel free to **contact us** for specific requests or for more information.

**Video demo** on the following link from our Youtube channel:

**Authorized Distributor in South Africa**



[www.promagtechserve.co.za](http://www.promagtechserve.co.za)

[info@promagtechserve.co.za](mailto:info@promagtechserve.co.za)

+27 (0) 79 084 8155

**CROMA · STRATO SERIES**

## OPTIONS

### SPEED ADJUSTMENT AFTER STARTING



Very convenient to adapt the cutting speed according to the material you are working with. This feature enables adjusting the initial movement of the wire by +/- 50%.

### PC HOUSING



This ergonomic cabinet includes the electronics, a compartment for the computer, as well as a dedicated space for the storage of consumables. The computer itself is optional.

### REMOTE CONTROL



Manual control of many features, such as:  
Speed setting (slow / fast).  
Turntable driving (in both directions).  
Start, pause or stop the cutting.  
Bring your wire to different definite positions, stored in the machine.

### PROTECTION AND SAFETY

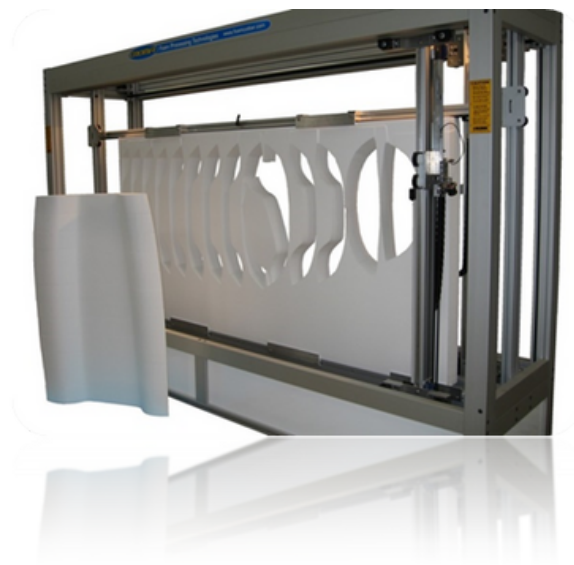


Light barriers, machine enclosure, smoke aspiration, safety laser scanner...  
Let's talk about your needs.

### COMPUTER CONTROL



Ordered to our official supplier DELL, we set it up with the required software for your application.



Feel free to **contact us** for specific requests or for more information.